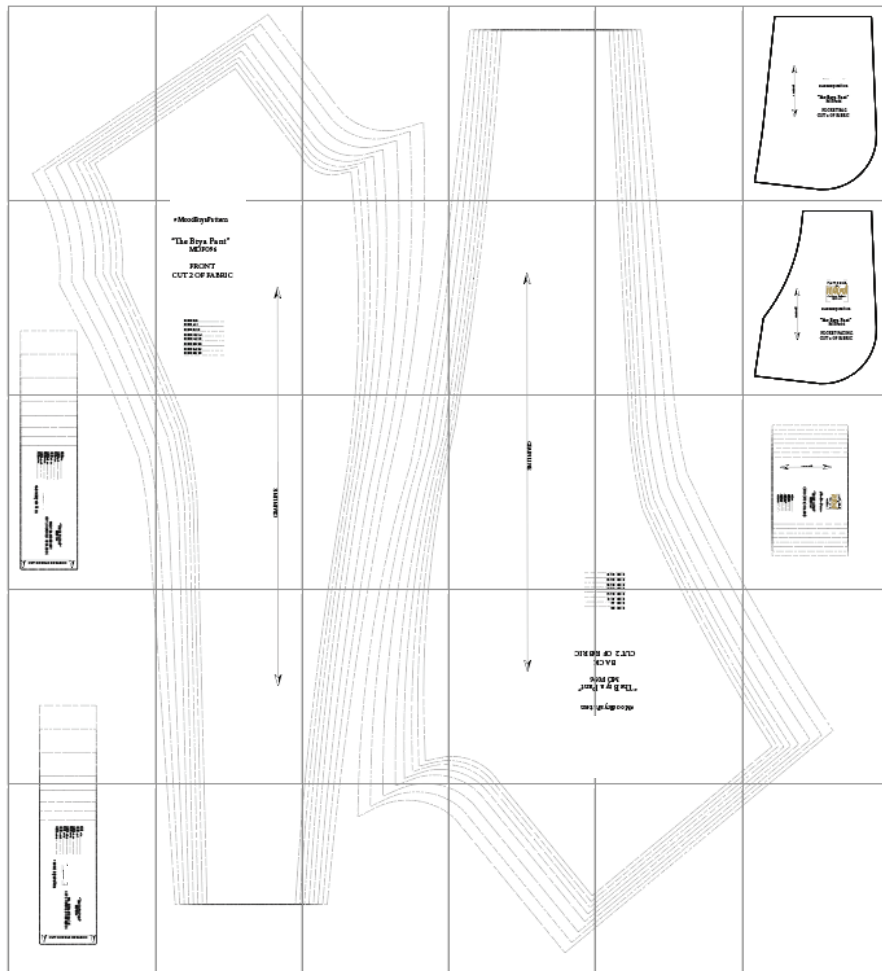


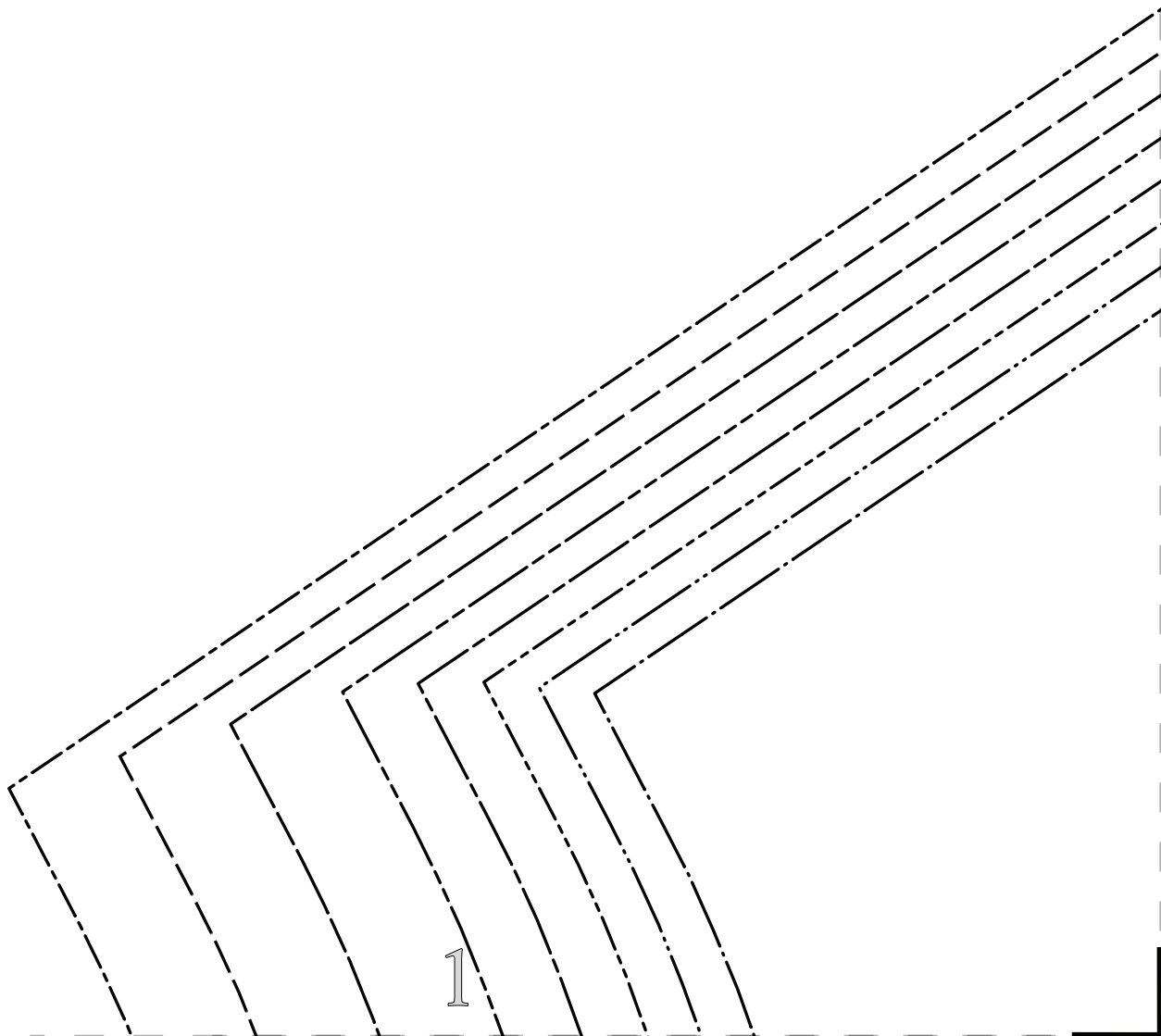
“The Brya Pant”

Sizes 0/2 to 28/30

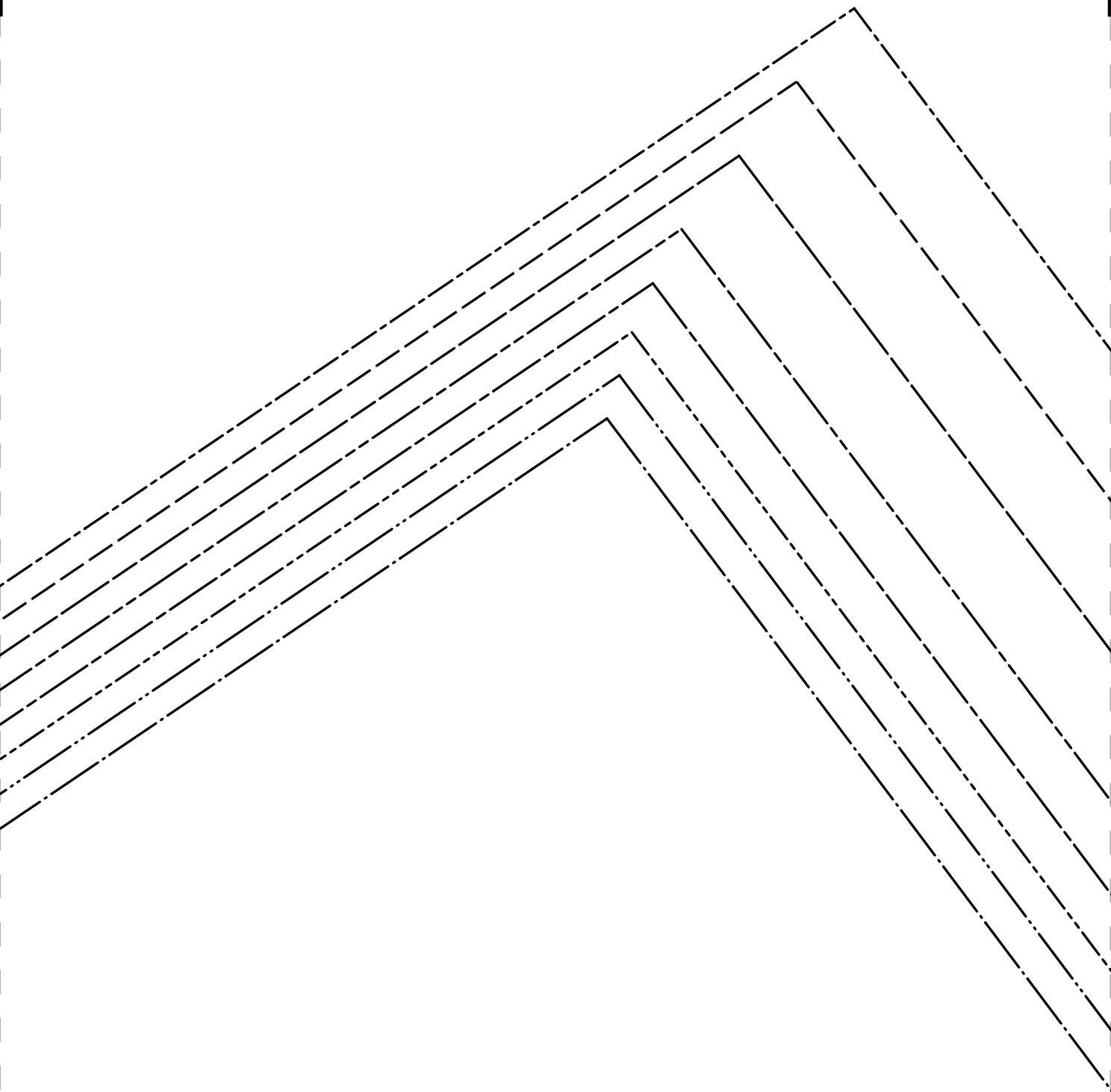
Stop!

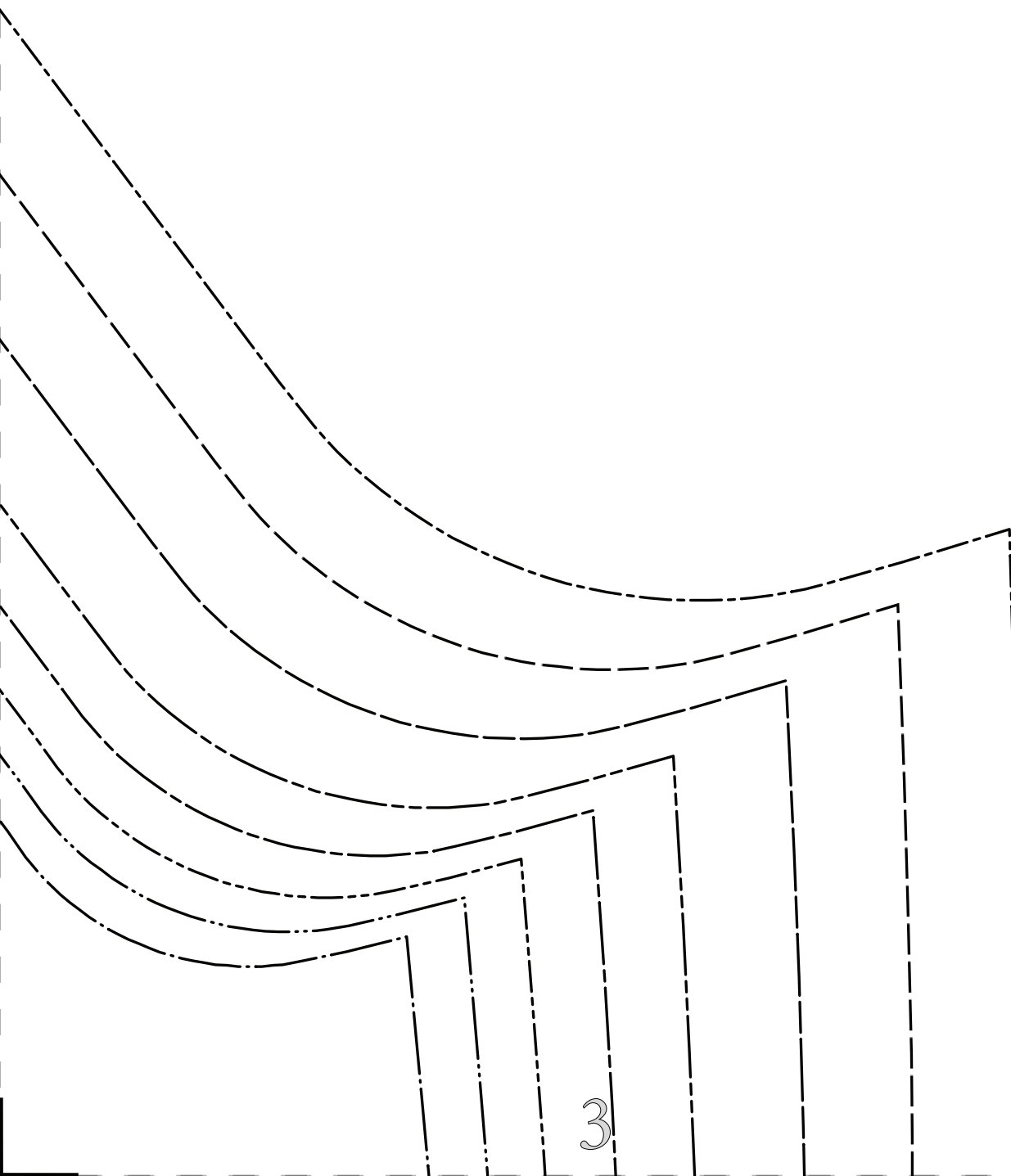
Print just this page first to check accuracy.
The Mood square to the left should measure
2 inches. Print “actual size” (no scaling).

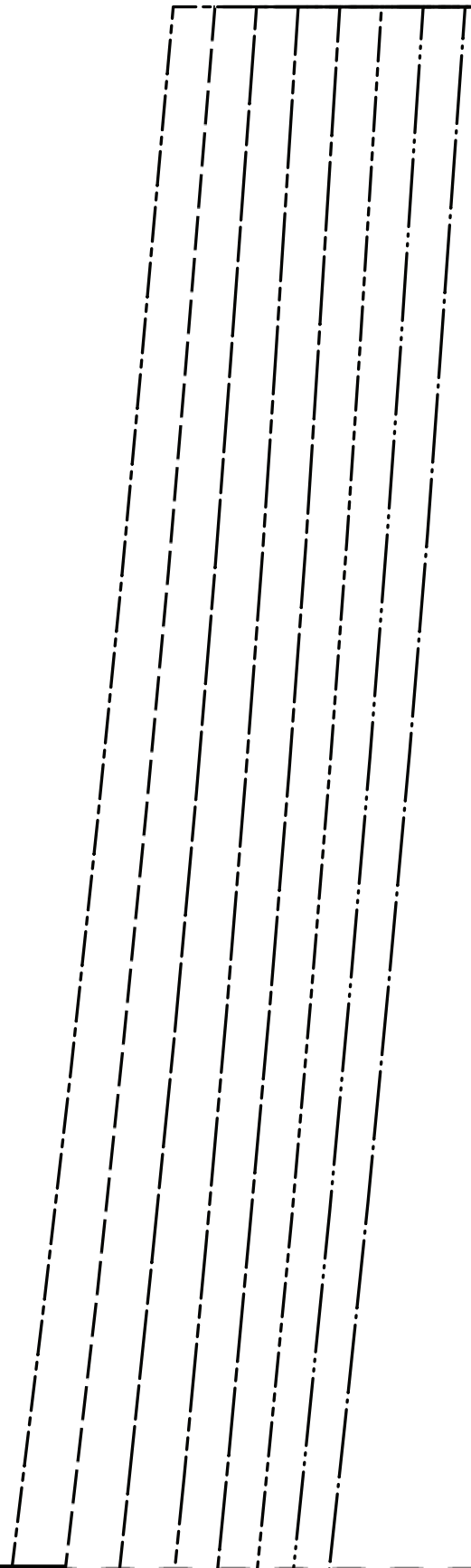


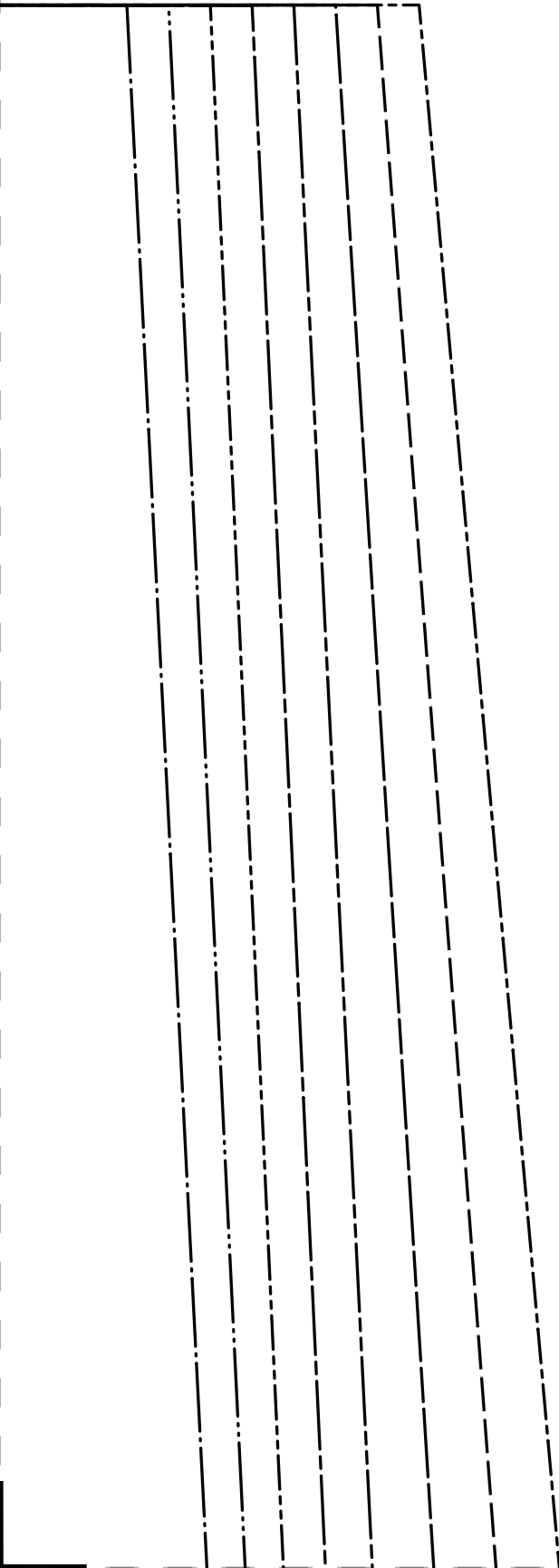


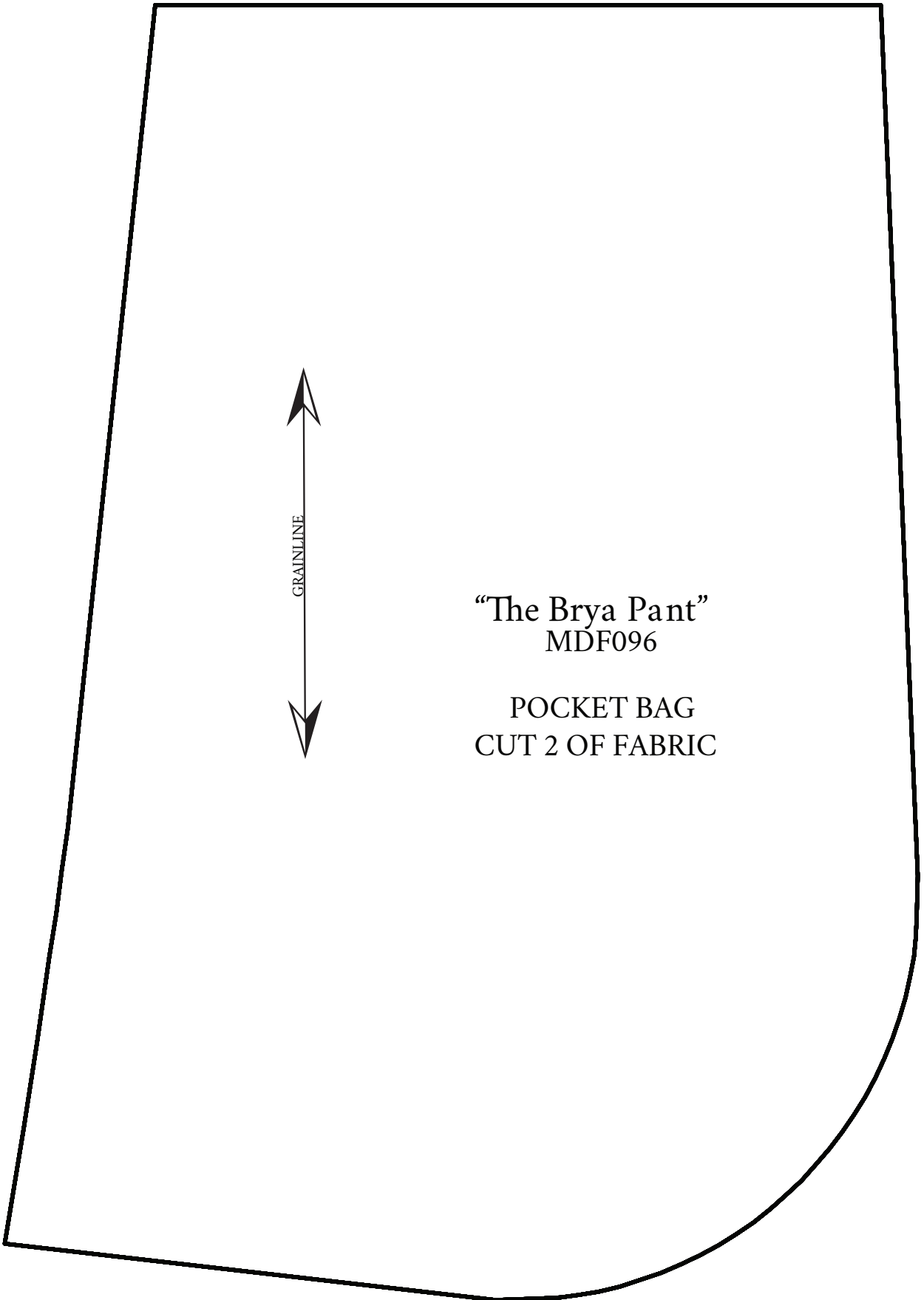
1







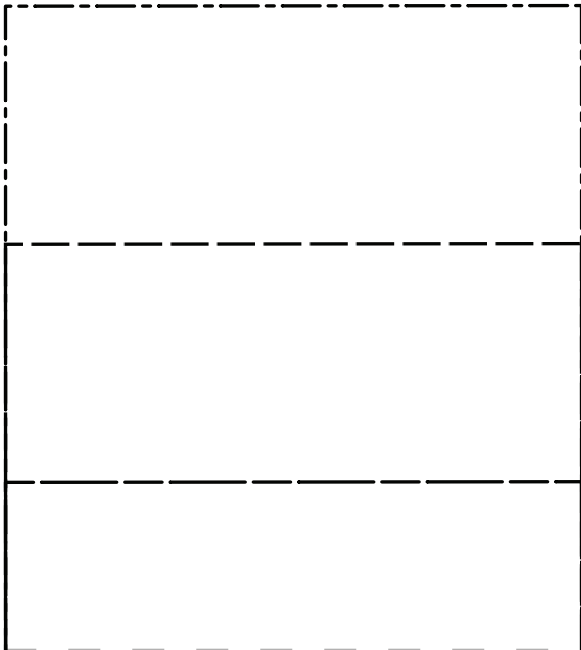
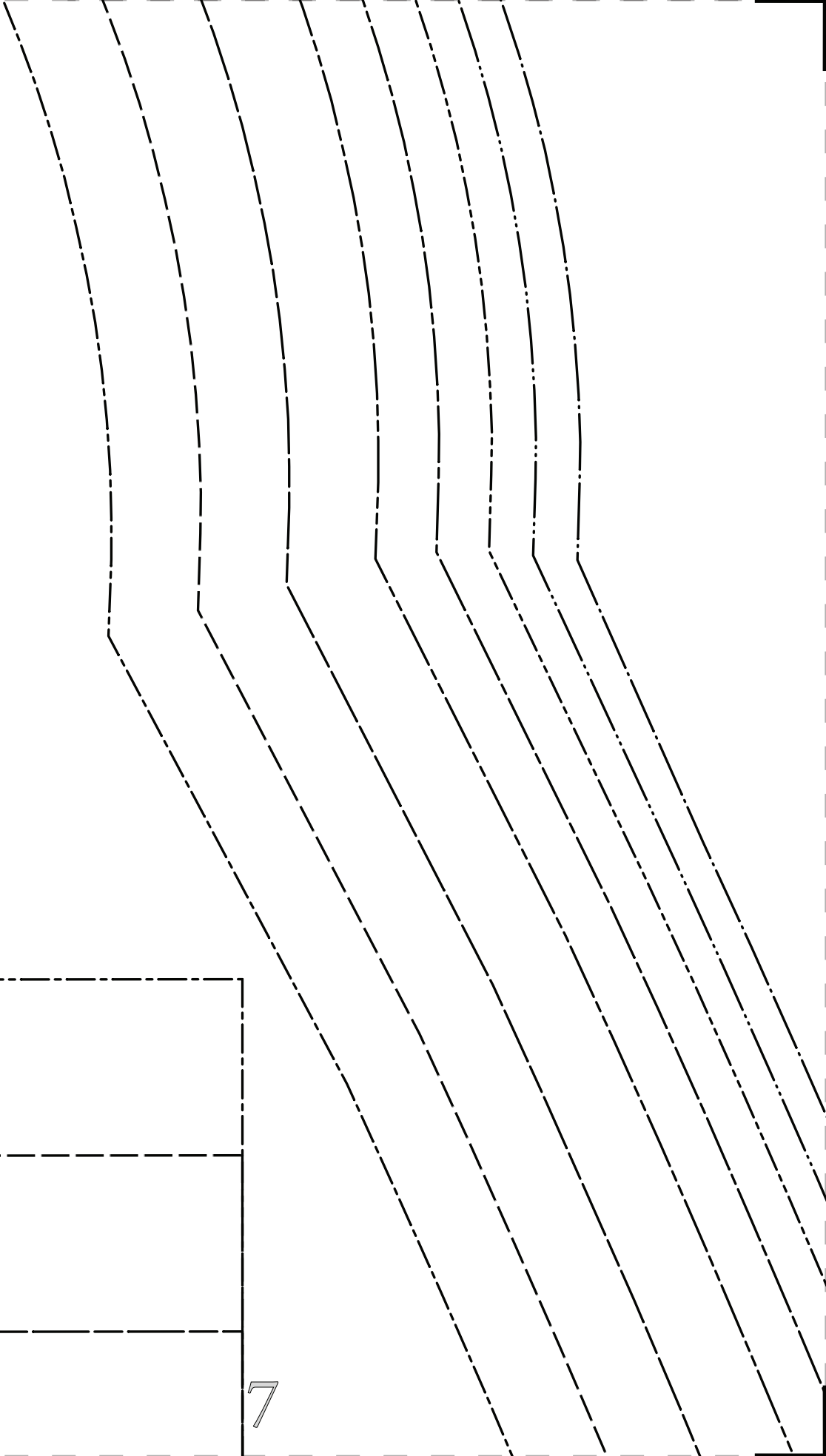




GRAINLINE

“The Brya Pant”
MDF096

POCKET BAG
CUT 2 OF FABRIC

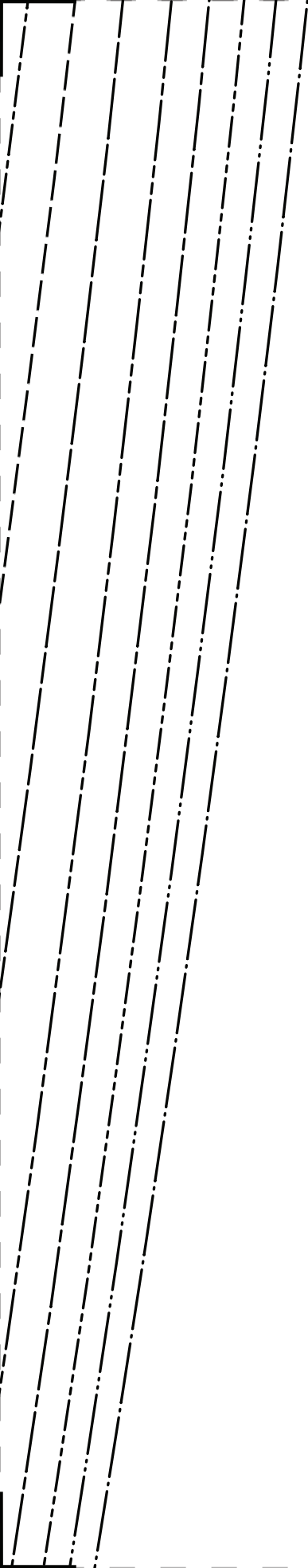


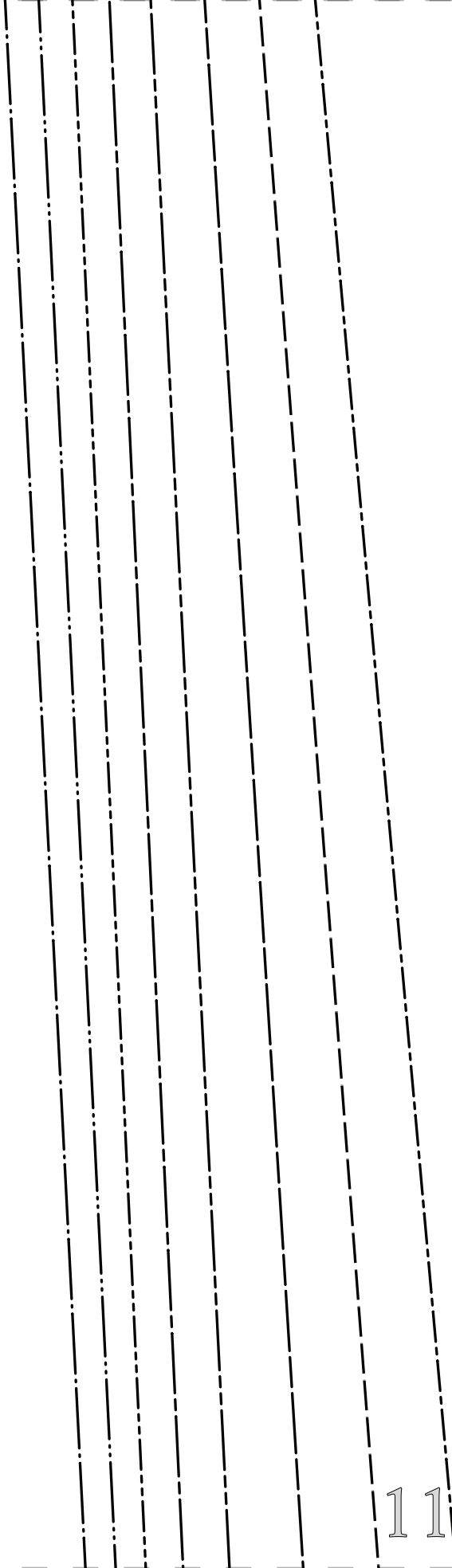
“The Brya Pant” MDF096

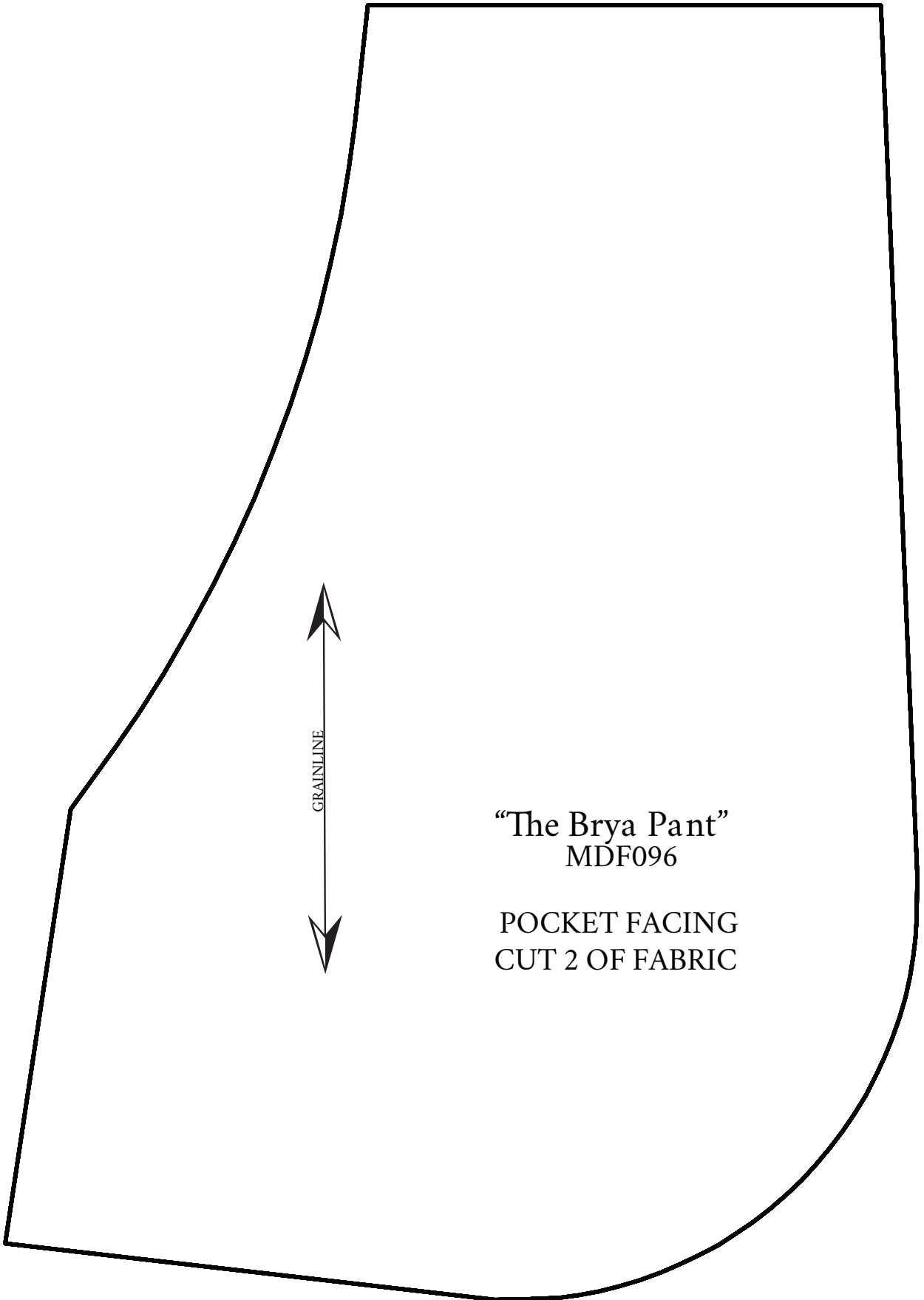
FRONT CUT 2 OF FABRIC

- SIZE 0/2
- SIZE 4/6
- SIZE 8/10
- SIZE 12/14
- SIZE 16/18
- SIZE 20/22
- SIZE 24/26
- SIZE 28/30









“The Brya Pant”
MDF096

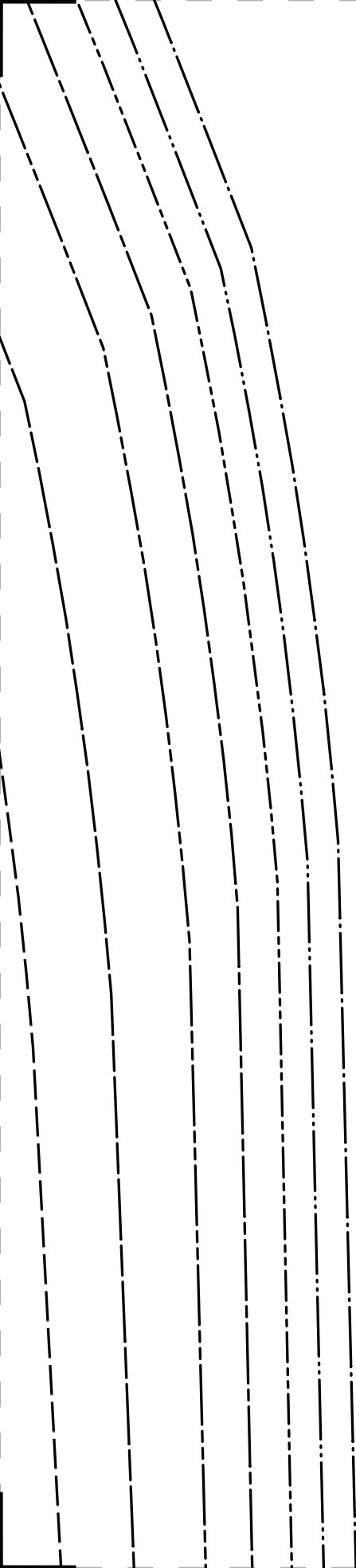
POCKET FACING
CUT 2 OF FABRIC

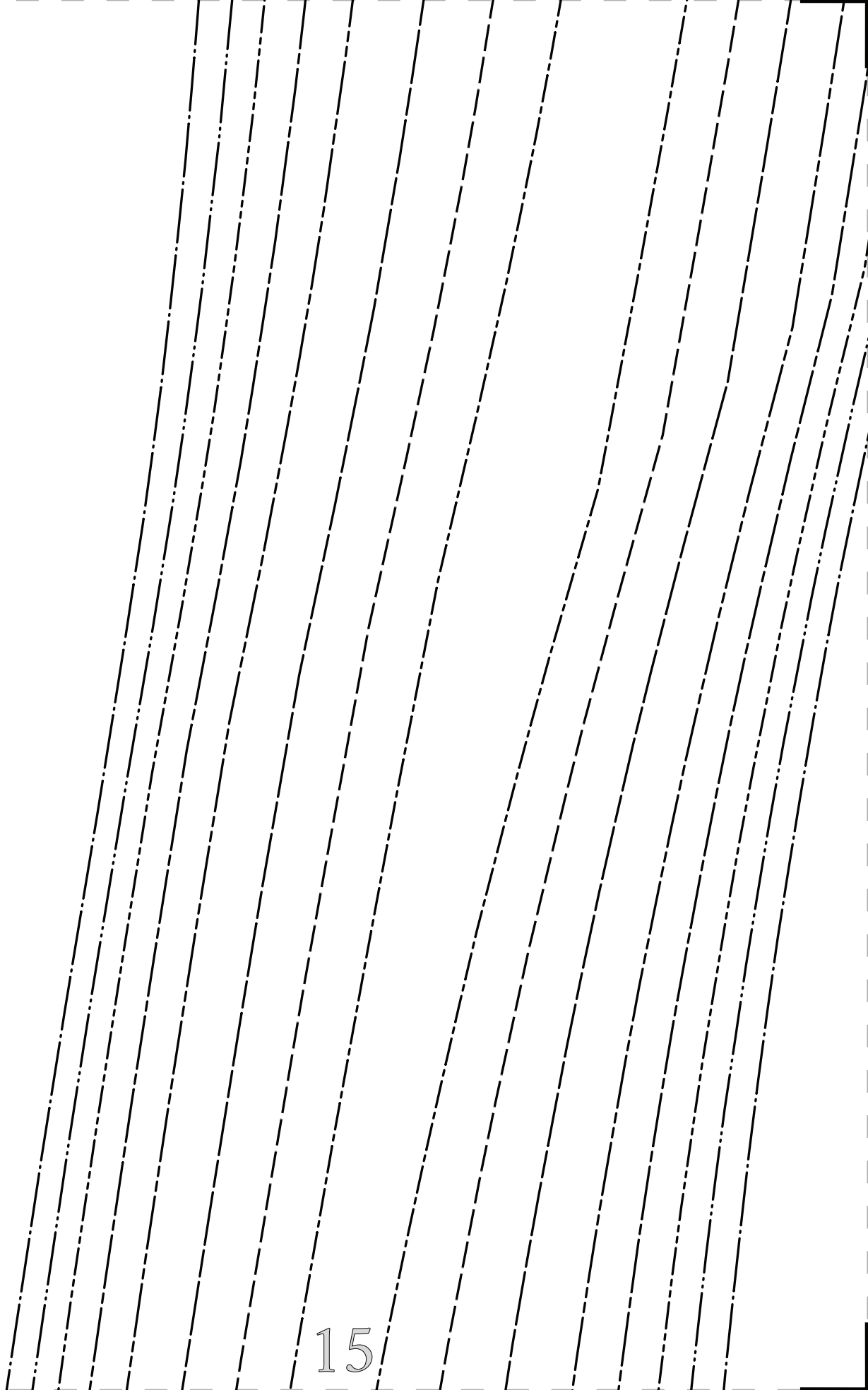
SIZE 0/2 _____
 SIZE 4/6 _____
 SIZE 8/10 _____
 SIZE 12/14 _____
 SIZE 16/18 _____
 SIZE 20/22 _____
 SIZE 24/26 _____
 SIZE 28/30 _____

"The Brya Pant"
 MDF096

WAISTBAND FRONT
 CUT 2 ON FOLD OF FABRIC

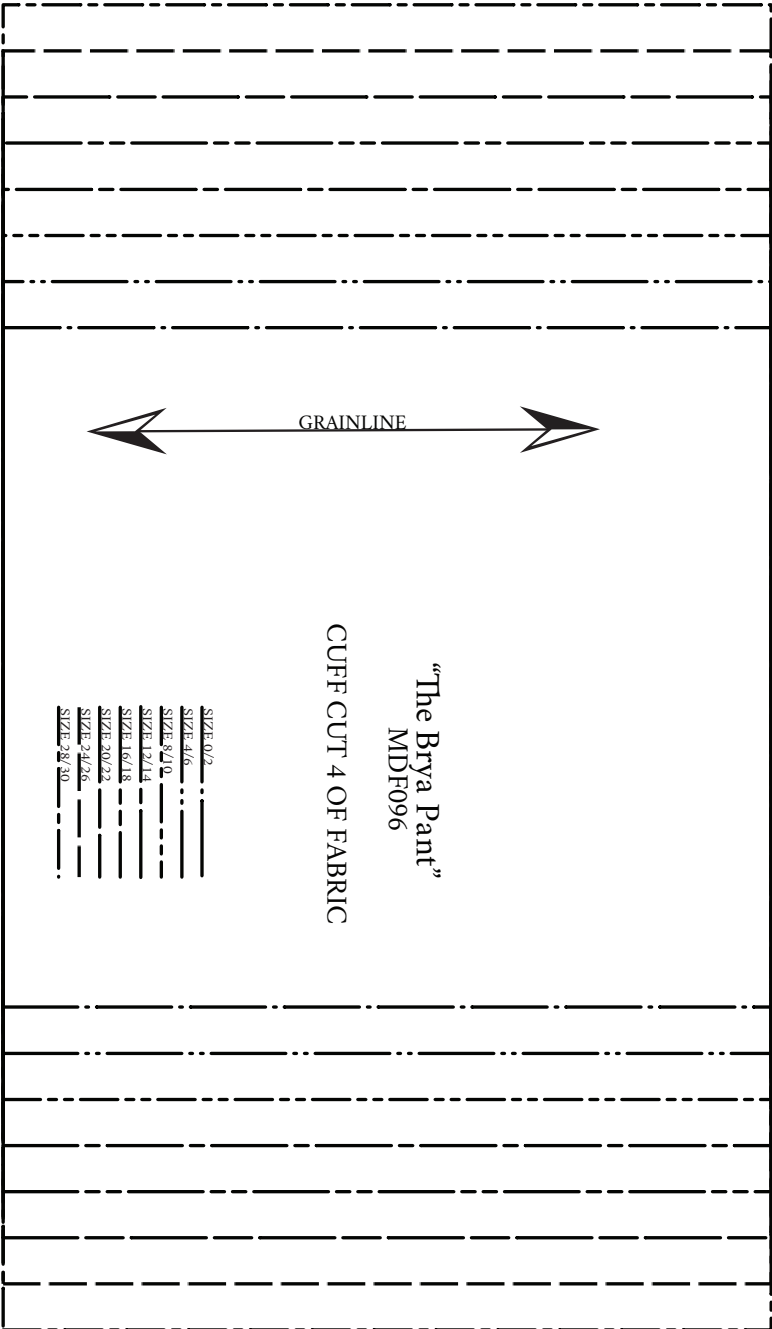
CUT ON FOLD OF FABRIC





GRAINLINE

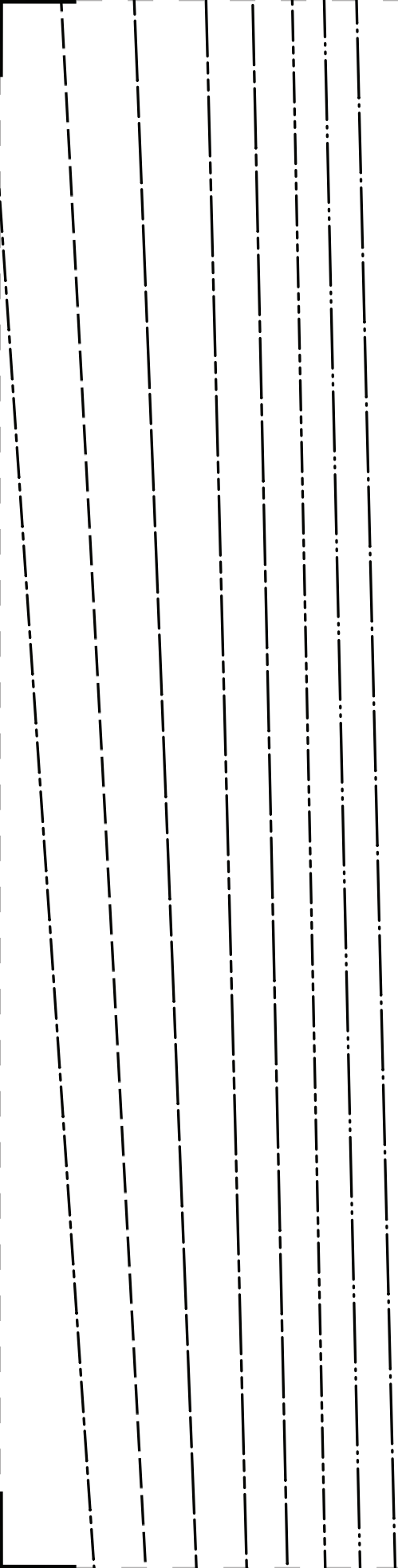
SIZE 19/18
SIZE 20/22
SIZE 24/26
SIZE 28/30

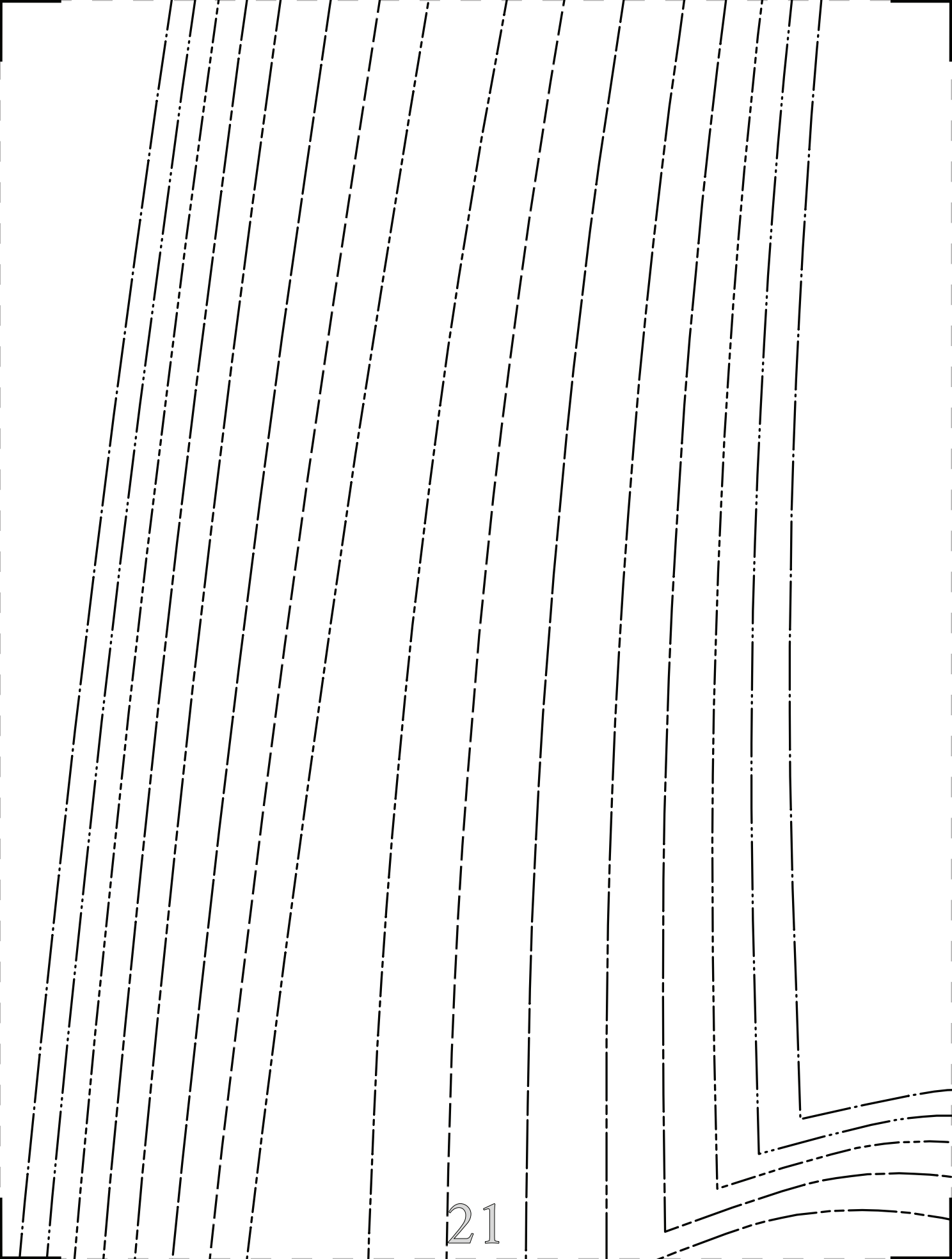


“The Brya Pant”
MDF096

CUFF CUT 4 OF FABRIC

SIZE 0/2
SIZE 4/6
SIZE 8/10
SIZE 12/14
SIZE 16/18
SIZE 20/22
SIZE 24/26

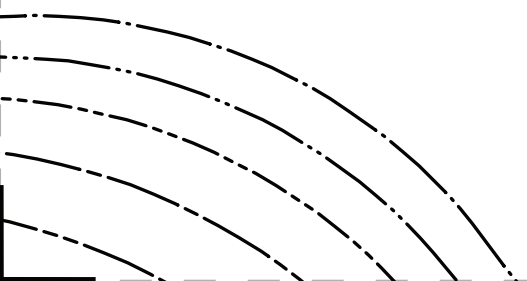






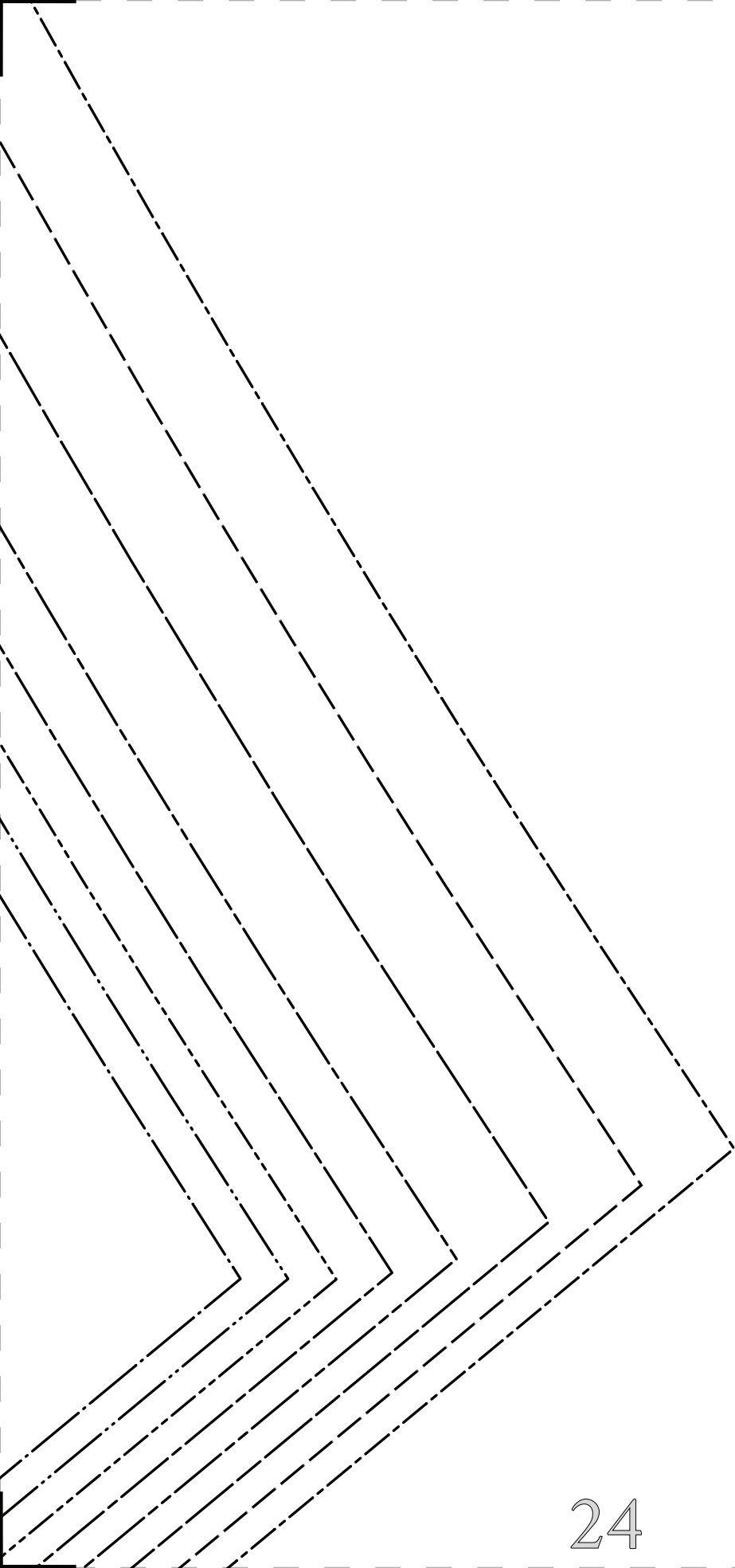
FABRIC

6
"ant"



SIZE 0/2
SIZE 4/6
SIZE 8/10
SIZE 12/14
SIZE 16/18

“The Brya P
MDF09
BACK
CUT 2 OF FA



SIZE 0/2 _____
SIZE 4/6 _____
SIZE 8/10 _____
SIZE 12/14 _____
SIZE 16/18 _____
SIZE 20/22 _____
SIZE 24/26 _____
SIZE 28/30 _____

“The Brya Pant”
MDF096

WAISTBAND BACK
CUT 2 ON FOLD OF FABRIC

CUT ON FOLD OF FABRIC

